

FM8000

Type FM8010

Feature

- 10.2" color TFT LCD
- 90 degree folding type
- 9 crystal high sensitive probe
- 152 mm thermal printer
- 24 hour data saving
- Built-in rechargeable battery (4 hour operation)
- Accurate and reliable real time FHR by DSP technology
- Automatic fetal movement detection and accounting
- Central monitoring interface

FHR

- Transducer : 9 crystals, wide wave beam, pulsed-wave working mode
- Operation frequency : 1 MHz
- FHR measuring range : 50 ~ 210 bpm
- Probe strength : less than 5mW/cm²
- Max audio power : 1.5 Watt

TOCO

- Measurement range : 0 ~ 100 units

Options

- NIBP, SPO2, MHR, ECG, RR, TEMP
- FAS (Fetal Acoustic Simulator)
- Twin FHR
- Wireless
- Touch Screen

Type FM8007

Feature

- 7" color TFT LCD
- 90 degree folding type
- 9 crystal high sensitive probe
- 110 mm thermal printer
- 24 hour data saving
- Built-in rechargeable battery (4 hour operation)
- Accurate and reliable real time FHR by DSP technology
- Automatic fetal movement detection and accounting

FHR

- Transducer : 9 crystals, wide wave beam, pulsed-wave working mode
- Operation frequency : 1 MHz
- FHR measuring range : 50 ~ 210 bpm
- Probe strength : less than 5mW/cm²
- Max audio power : 1.5 Watt

TOCO

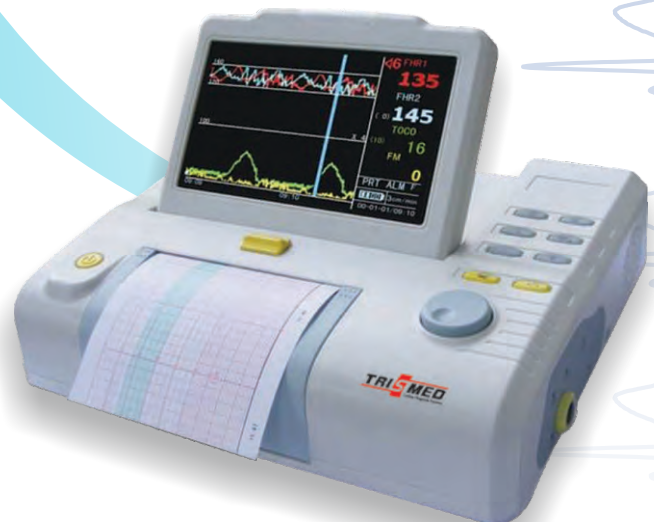
- Measurement range : 0 ~ 100 units

Options

- NIBP, SPO2, MHR
- FAS (Fetal Acoustic Simulator)
- Twin FHR



Type FM8010



Type FM8007

FM8000 Technical Specification

| | | | |
|--|--|--|--|
| Fetal Heart Rate | | Measure scope | 30bpm ~ 240bpm |
| Transducer | Multi-crystals, pulsed doppler , high sensitively | Measure accuracy | ±2bpm |
| Strength | <5mW/cm ² | NIBP measure(option) | a) NIBP-SYS (6.7 ~ 32.0Kpa)(50 ~ 240mmHg) |
| Working frequency | 1.0MHz | | b) NIBP-DIA (3.4 ~ 26.6Kpa)(25 ~ 200mmHg) |
| Signal processing | special DSP system and modern reorganization. | | c) NIBP-MEAN(2.0 ~ 24.0ka(15 ~ 180mmHg) |
| Measurement range | 50~210bpm | NIBP Accuracy | ±1.1kPa (±8mmHg) or ±5% of the results, take the bigger one. |
| Alarm Range | | Maximum Mean error | ±5mmHg |
| High limit | 160,170,180,190bpm | Maximum Standard deviation | 8mmHg |
| Low limit | 90,100,110,120bpm | Pulse Rate Accuracy | Maximum Mean error : ±2bpm |
| Maximum audio output power | 1.5 Watt | Measure accuracy | ±2bpm or ±5% of the results, take the bigger one. |
| TOCO | | Measure mode | Manual / Auto |
| Measurement range | 0~100 units | ECG(option) | |
| Display | | CMRR: | ≥ 90dB |
| The LCD displays FHR, TOCO, FM, maternal parameters, time, date, and volume, etc., It can store and playback the data. | | Heart Rate Measurement and Alarm Range | 15-300bpm |
| Power | Type8007 - AC 100-240V, 50/60Hz, 8.4V Li-ION battery Type8010 - AC 100-240V, 50/60Hz, 16.8V Lithium battery | Accuracy | ±1bpm |
| Power Consumption | < 20W | Lead Selection | I, II, III, aVR, aVL, aVF |
| Dimension | Type8007: 295W×240D×73H (mm) Type8010: 320W×350D×85H (mm) | Input | 3 / 5-lead ECG cable |
| Net weight | Type8007: 1.75kg, Type8010: 3.5kg | Sweep Speed | 6.25, 12.5, 25 mm/s |
| Environment(Working) | Temperature: +5°C ~ +40°C | Amplitude Selection | x1/4, x1/2, x1, x2, x4 |
| | Humidity: < 85% | Frequency Response: | |
| | Atmospheric pressure: 86kPa ~ 106kPa | Monitoring | 0.5 to 35Hz (+0.4dB, 3.0dB) |
| Environment(Transport/storage) | Temperature: -10 °C ~ +55 °C | Defibrillation Protection | 5kV test |
| | Humidity: < 93% | Recovery Time Following Defibrillation | Less than 5 seconds |
| | Atmospheric pressure: 86kPa ~ 106kPa | Temperature(option) | |
| Transducer Acoustic Output | | Measurement and Alarm Limit | 0-50°C |
| Under the requirements laid down in IEC 1157, 1992, the peak negative acoustic pressure does not exceed 1Mpa. The output beam intensity does not exceed 20mW/cm ² and the spatial-peak temporal-average intensity does not exceed 100mW/cm ² | | Probe | Skin surface |
| Maternal SpO ₂ measure (option) | | Unit | Celsius/Fahrenheit |
| Measure scope | 70% ~ 99% | Accuracy | ±0.1°C(25°C ~45°C), ±0.2°C(0°C ~25°C or 45°C ~50°C) |
| Measure accuracy | ±3% | Resolution | 0.1°C |
| Pregnant HR Measure(option) | | Respiration(option) | |
| Measure scope | 70% ~ 99% | Measurement Mode | Thoracic Impedance |
| Measure accuracy | ±3% | Respiration Rate | 7-150 bpm |
| Pregnant HR Measure(option) | | Waveform Display Speed | 6.25, 12.5, 25 mm/s |

* Contents and specification subjects change without notice

TRISMED CO., LTD 409 SMECA, 65 Techno 3-ro, Yuseong-gu, Daejeon 34016, Republic of Korea
E-mail, Sales: trismed@trismed.com, Service: info@trismed.com **Web**: www.trismed.com
Tel, +82-42-936-7201 **Fax**, +82-42-936-7202

TRISMED
 Cardiac Diagnosis Systems
 Satisfaction Superiority Specialization

Cat. No.: MD-Cat8000-001 Rev.1 2015-07-17. Printed in Korea